



COMPANY PROFILE

# ***ABOUT US***

We design and produce “Plug & Play” **electronic solutions** for high-performance systems, where **reliability, durability** and **longevity** are top priority requirements.

# ***MISSION***

We work to be **the technology partner of the top brands in the automotive and industrial markets.**

# FIGURES



**4000**

**sqm**

ON 2 PLANTS



**25**

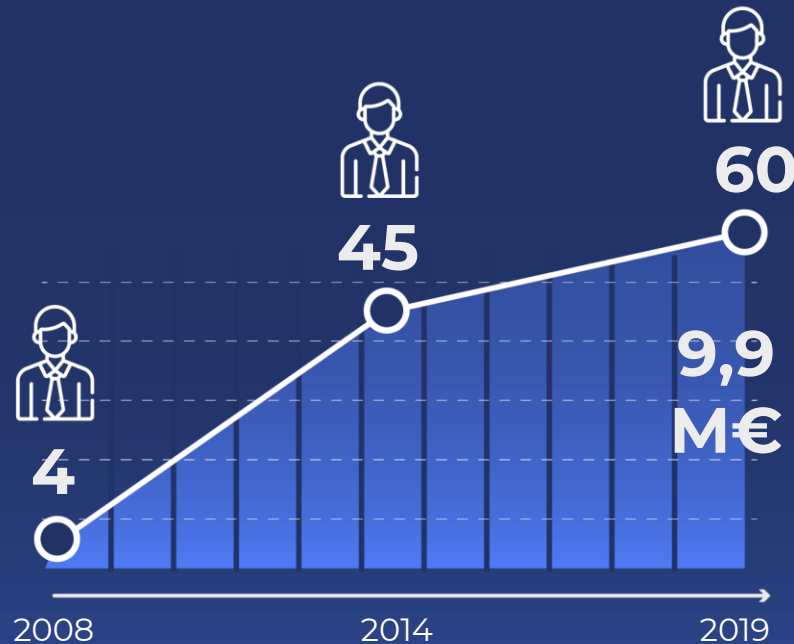
ENGINEERS  
ON R&D



**2**

ELECTRONIC  
PRODUCTION LINES

# PEOPLE



# COMPETENCES

System  
Definition

Hardware  
Development

Software  
Development

Design For  
Testability

Prototypes  
And Volume  
Production

Mechanical  
Development

Firmware  
Development

Design For  
Manufacturing

Product & Process  
Validation

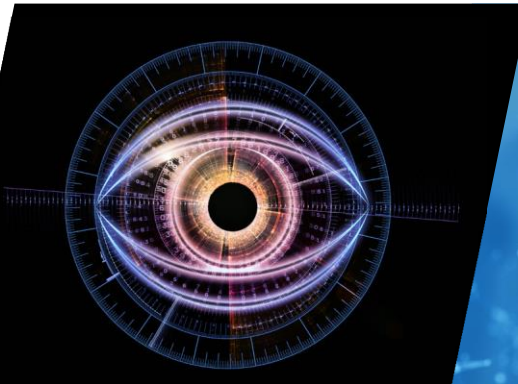
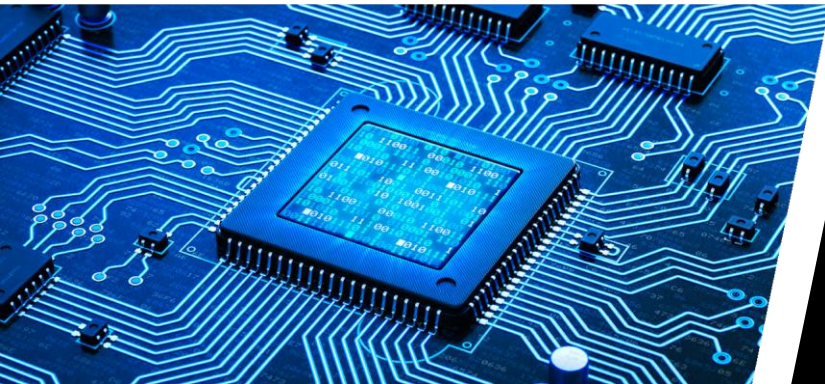
Our engineers are committed to combine the most advanced technologies with the concreteness of a reliable product.

EGICON Lab is a certified laboratory of the Emilia Romagna High Technology Network.

**EMBEDDED SYSTEMS**

**AUTOMATIC TESTING SOLUTIONS**

**PRODUCTION**





# NETWORK

- COGNEX: Partner System Integrator
- KUKA: Technology Partner
- CRIT: Accredited Supplier
- DEMOCENTER: Member
- CLUB MECCATRONICA: Member
- IMAMOTER: Partner
- Certified Laboratory of  
EMILIA ROMAGNA  
HIGH TECHNOLOGY NETWORK



DEMOCENTER



**EGICON**  
Reliable engineering

# ***BUSINESS UNITS***

## ***AUTOMOTIVE***



### **Industrial vehicles**

- Agricultural & Construction
- Trucks



### **Militar vehicles**



### **Motorcycles**



### **Car**

- Road
- Racing
- Supercar

## ***INDUSTRIAL***



### **Industrial Automation**



### **Biomedical & Pharma**



### **Packaging**



### **Power & Energy**



### **Food and Beverage**



### **Electronic ODM**

# AUTOMOTIVE

INSTRUMENT  
CLUSTER

HMI

SENSORS

DATA  
LOGGER

ELECTRONIC  
CONTROL UNITS



# INDUSTRIAL

ELECTRONIC  
CONTROL  
UNITS

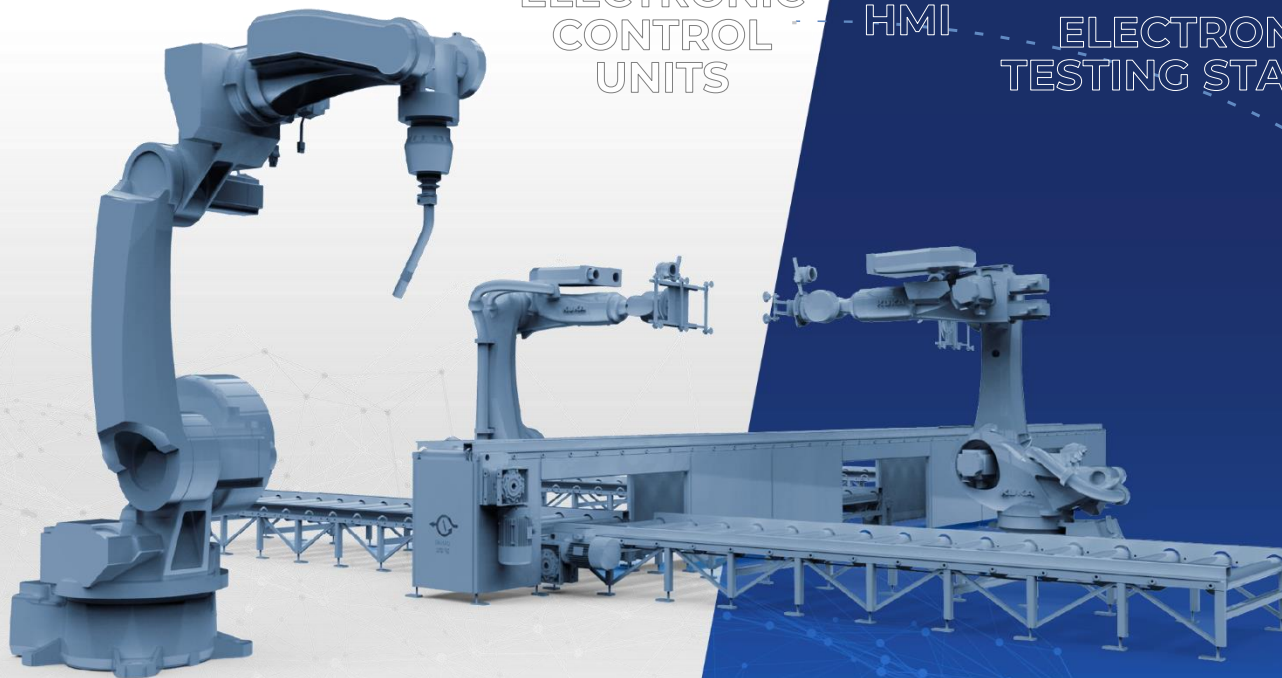
HMI

ELECTRONIC  
TESTING STATION

MACHINE  
VISION

ARTIFICIAL  
INTELLIGENCE

COLLABORATIVE  
AND MOBILE  
ROBOTS



**EGICON**  
Reliable engineering 



# **SERVICE UNITS**

---



***ELECTRONIC SYSTEMS***



***AUTOMATIC TESTING SOLUTIONS***



***PRODUCTION***

# EGICON

## EMBEDDED SYSTEM

We are specialized in designing and manufacturing EMBEDDED solutions for applications that require high levels of reliability and safety.

HARDWARE

FIRMWARE

SOFTWARE

MECHANICAL  
DESIGN

VALIDATION

PRODUCTION

**EGICON**  
Reliable engineering 



# EGICON

## AUTOMATIC TESTING SOLUTIONS

We are specialized in inspection and testing systems.

MACHINE  
VISION

TESTING  
SYSTEMS

ARTIFICIAL  
INTELLIGENCE

ROBOT  
VISION

COLLABORATIVE  
ROBOTS

MOBILE  
ROBOTS



# EGICON

---

## PRODUCTION

From industrialization to series production for a “PLUG & PLAY SOLUTION”.

SINGLE BOARD  
LASER MARKING

BOARD  
COMPONENT  
FULL  
TRACEABILITY

INDUSTRY 4.0  
SYSTEM BY  
MENTOR VALOR

PRODUCTION  
B.I.

IOT ON EACH  
PRODUCTION  
MACHINE AND  
TEST STATION

VALOR PCB  
MANUFACTURING  
SOLUTIONS



### INDUSTRIALIZATION

- Process FMEA
- Design for Quality
- Design for Testability
- Design for Manufacturing

### TESTING DEVELOPMENT BY EGICON

- SPI, AOI, XRAY, ICT
- Custom Functional test on EGICON LATFORM
- Environmental test: Temperature, Vibration

### AUTOMATIC HANDLING & FINISHING

- Custom automation by EGICON ATS Team
- Artificial Intelligence THT control (EGICON Product)
- Selective THT Soldering
- Automatic potting station
- Automatic conformal coating line
- 3D robot for gasket

### PLUG & PLAY

### FAST PROTOTYPING

- Prototype assembly on qualified production line
- Prototype testing before delivery

### SERIES PRODUCTION

- Electronic board
- Complete system (Board + Mechanical + harnesses + ....)



# QUALITY

WE ARE  
COMMITTED  
TO GARANTEE  
THE BEST  
QUALITY LEVEL.



ISO 9001



ISO 13485



IATF 16949



ISO 14001



IMQ MID ATEX

**EGILCON**  
Reliable engineering

# ***OUR VALUES***

REL  
IABI  
LITY

COM  
PET  
ENCE

COLL  
ABOR  
ATION

AGI  
LITY

CRE  
ATI  
VITY

INNO  
VAT  
ION

# CONTACT

## **Lucio Madella Amadei**

GENERAL MANAGEMENT  
Sales Director Automotive

lucio.madella@egicon.com  
+39 345 70 97 210

---

## **Nicola Marianucci**

Sales Director Industrial

nicola.marianucci@egicon.com  
+39 335 72 51 346

---

## **Giuliano Tralli**

Sales Manager

giuliano.tralli@egicon.com  
+39 346 95 74 278

**[www.egicon.com](http://www.egicon.com)**

---



**EGICON S.r.l.**  
**41037 – Mirandola (MO) ITALY**

**TEL: +39 0535 26411**

**EGICON**  
Reliable engineering 